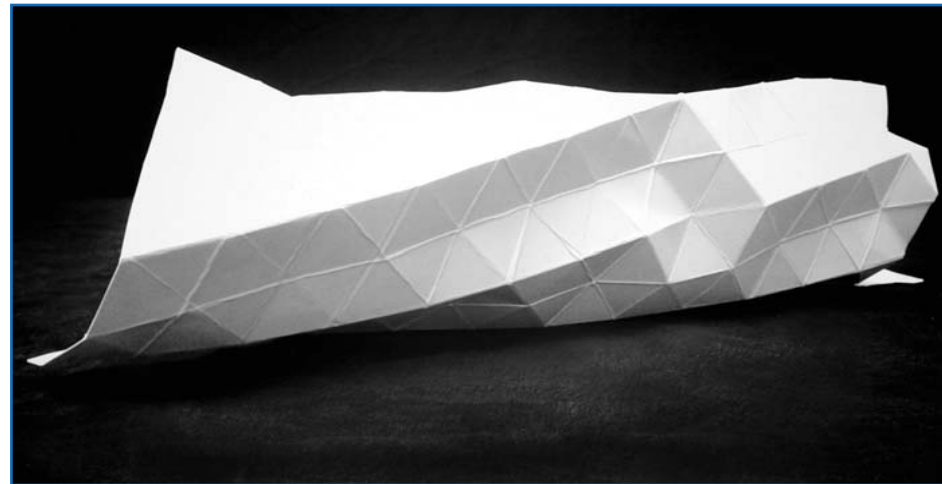


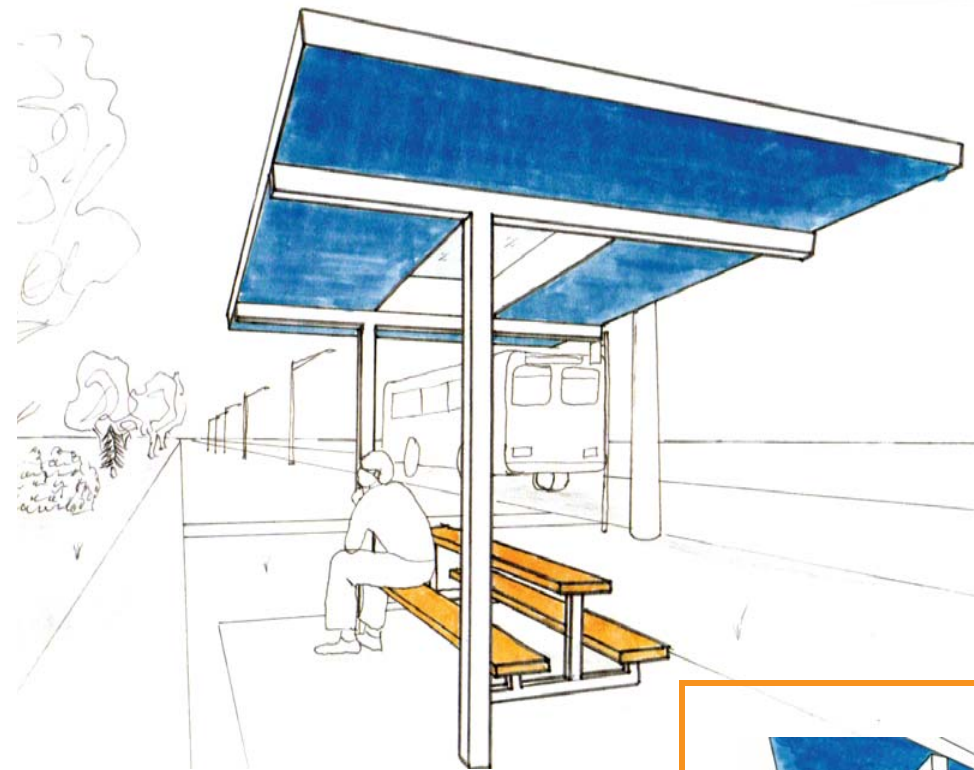
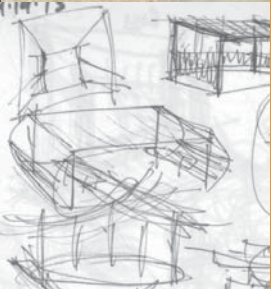


keli  
DEAN



manipulation of  
vertical and  
horizontal space





bus stop: a community gathering place

Every more energy line should have intent.

bars don't connect → ch

translucent

materials

glass panels to

no stools

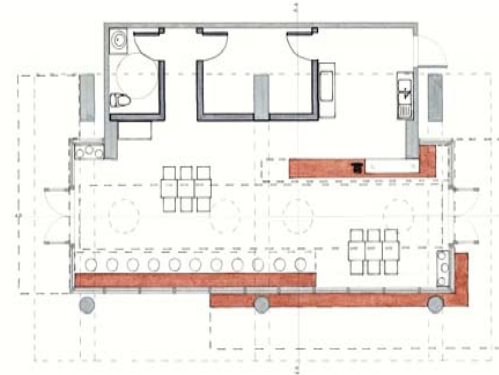
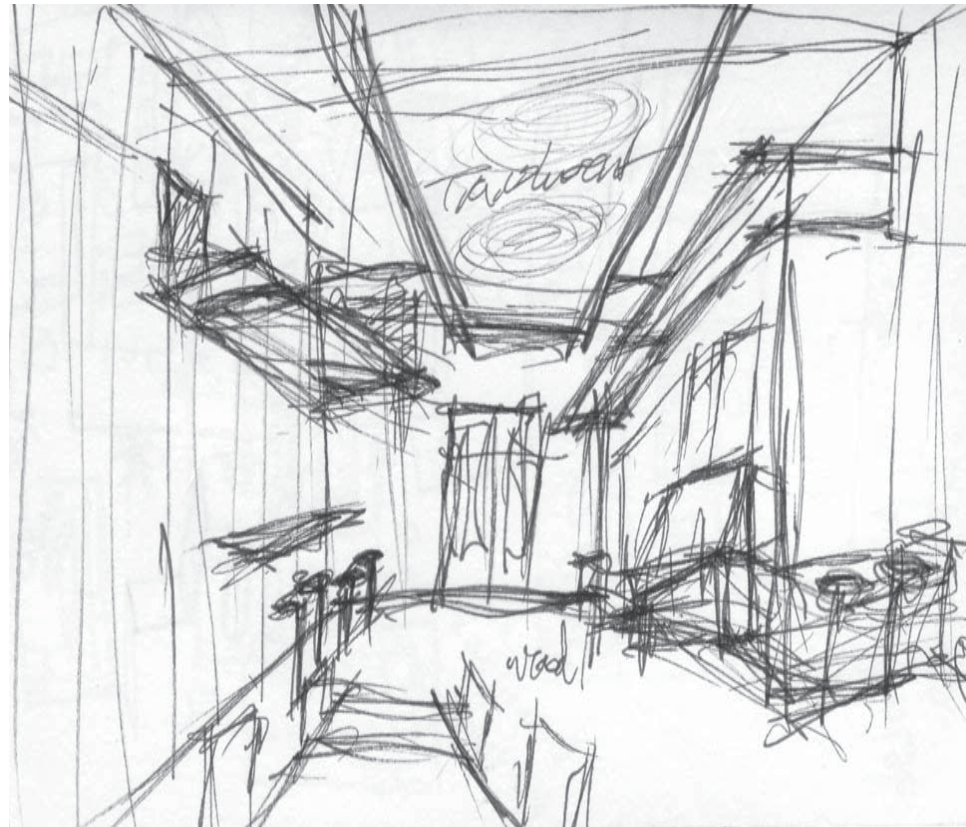
bus riders still close to stop

The chocolate bar

takes things whole space @ different levels

wood

seat chocolate bar



vertical planes connecting inside and out



photography

camera:  
holga 120n  
film: kodak tri-x 120  
paper: ilford rc pearl



keli  
DEAN

interior design  
bellevue college  
kelsimad@gmail.com